



Helen Jones Moss Vale

# Hot Art

Christmas and New Year, art enthusiasts have a wide range of exhibitions to enjoy, many featuring works of local artists across wide-ranging medium.



Vivienne Cole's image from 'The Talented Mr Ripley' in Piazza San Marco, Venice

## Through the Looking Glass

Reflecting her passion for travel and adventure and penchant for Europe, particularly France, Southern Highlands photographer Vivienne Cole's 'Through the Looking Glass' exhibition promises to take patrons on a journey to another world. Much-exhibited Vivienne draws creative inspiration from her travels, and French photographers Doisneau and Cartier-Bresson. While roaming Europe in the late 1990's, she quickly discovered that being behind the lens honed her already highly developed eye for detail, and that the camera enables connection with people she would otherwise never have met.

A love of history and anything steeped in history has fostered Vivienne's desire to preserve tradition and to apply traditional photographic techniques – her black and white images are all hand-printed fibre based silver gelatin prints and platinum palladium prints on French rag paper to create exquisite old world images of archival quality. Vivienne's images offer glimpses of other realities, from daily lives to magical instances, including a shot taken when she stumbled across filming of the movie 'The Talented Mr Ripley' in Piazza San Marco, Venice.

Vivienne Cole's 'Through the Looking Glass – Journey to another World' is at CTC Robertson, 58-60 Hoddle Street Robertson until January 10th, 2007

refined silverware still lifes. From Ian Grant's soft themes to the light-filled landscapes by Joanna Logue and Miranda Keeling's sky studies to the quirky and fun pencil drawings by Gordon Fitchett, and John Winch's finely detailed illustrative works. From Margaret Woodward's mixed media studies and the collectable Olsens to the vibrant works of Nona Burden and seascapes by Neil Taylor.

And then there are the wonderful sculptures of Bronwyn Berman, Annie Herron and Stephen Glassborow. Not to mention the rapidly selling soft ground etchings by 'dark horse' Lesley Hickey who has apparently adopted an "if you can't beat 'em, join 'em" approach.

'The Christmas Exhibition' continues at The Bell Gallery, Jellore Street Berrima until 30th December

## Talking Pots at Sturt

Renowned for her large and colourful illustrated hand-built ceramics, South Coast based artist Madeleine Meyer returns to Sturt with an exhibition which promises to delight anyone who sees it. Her unique style reflects the influence of travel and her enjoyment of storytelling and drama to create the stories she uses to uniquely decorate her ceramics. The viewer is free to interpret them as they wish. Madeleine's exhibition also includes story-telling drawings and black and white prints which she feels have more ambiguity and intensity and an edge unattainable in ceramics.

Madeleine Meyer – 'Recent Ceramics and Prints' at Sturt Gallery, Range Road Mittagong from December 15th to January 28th 2007. Sturt Summer School, from Tuesday 2nd to Sunday 8th of January 2007.

## Naturescapes at Mindirr II Gallery

Seven local photographers from diverse backgrounds will show their images in a stunning new exhibition to be held at Mindirr II Gallery in January. The landscape and naturescape exhibition highlights the local area, with works from established and emerging photographers of the district. Works include large scale detailed Naturescapes in Black and White, shot largely in the Wingecarribee Shire by celebrated photographer Jon Lewis, who is perhaps better known for his character-filled portraits taken throughout Australia and Oceania. (His breathtaking 'Face to Face (200 Faces for 200 Years)' is part of the collection in the National Australian Museum).

Other local photographers showing include Jodi Wiggins and Robert Leso (who have also produced iconic images using silver gelatin and platinum and palladium prints), detailed landscapes from Tarago sheep farmer Steve Hartup and experimental colour landscapes printed on fine art paper from Czes Staciwa to name a few. Coinciding with Naturescapes is an exclusive showing of Australian photography by the legendary Max Dupain (1911-1992) along with B+W prints by his former assistant and photographer Jill White.

'Naturescapes', from Saturday 13th January (official opening at 1pm) to 13th February 2007, Mindirr Gallery II Fine Arts, 2/2 Queen Street Mittagong NSW.

The Artists Floor Talk for Naturescapes Photography Exhibition takes place at 1pm Saturday 20th January 2007.

## Summer 2007

The Milk Factory Gallery's summer exhibition brings together all of the artists who exhibited at the gallery throughout 2006. The exhibition contains a collection of distinctive works from Greg Hyde, Del Cooley, Square Ink Gallery, Tracey Miller, Les Zietara, Jill Zietara and Bronwyn Berman along with pieces from the Italian Exhibition, the Chinese Exhibition from November 06 and some new works from artists who will be exhibiting in 2007.

Based in the Southern Highlands, the Square Ink Gallery offers an on-line collection of contemporary art and design and specializes in emerging and mid-career Australian and British artists including Lucinda McDonald, whose work takes on the systematic and repetitive aspects inherent in metalworking, transferring them to canvas or metal in patterns of colour relating to one another through paired down themes.

## Art Auction and Benefit

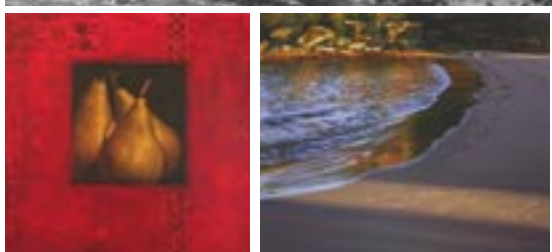
Don't forget the Four Legged Benefit exhibition, art sale and auction featuring works by some of the most exciting and emerging artists in Australia today, with an auction of selected works at 2pm on the 17th of December. For further details on the exhibition, the artists and their work you can go to [www.bruyersgray.com/fourleggedbenefit.html](http://www.bruyersgray.com/fourleggedbenefit.html)

'Summer 2007' from Saturday 22nd December and throughout January 07.

'The Four Legged Benefit for the local Dog Shelter' from the 9th-20th December at The Milk Factory Gallery, Exhibition Space and Cafe, 31 Station Street Bowral.



Belmore Falls by Robert Leso



Nona Burden 'Red #2', Neil Taylor 'Balmoral Sundown'



Madeleine Meyer Ceramic

## Christmas Bells

The Christmas Exhibition at the Bell Gallery presents a well-considered collection of fine works in a variety of media and style. Evocative landscapes in oil and acrylic juxtapose works in pastel, pencil, soft ground etchings and metallic sculptures. From Madeleine Winch's subtle 'Bundanon' series to the vibrant outback scenes by local painter Richard Allen to Peter Hickey's